

Prepare observe and move

May 6, 2012

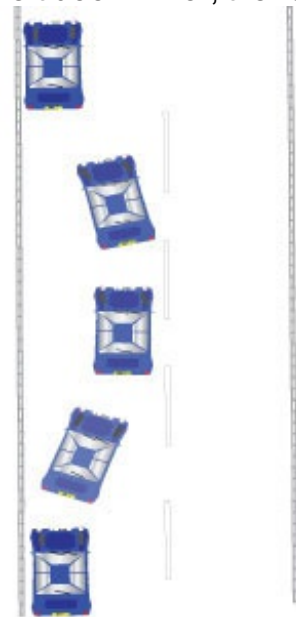
Moving off and stopping on level ground

Prepare

Clutch fully down select first gear and bring the clutch up slowly listen to the engine and watch the bonnet, when the engine note changes and the bonnet starts to lift this is called the bite point, keep your foot very still. Prepare the parking brake by pushing the chrome button in and at the same time gently lifting up the brake handle, hold the brake still.

Observe

Moving off make a six point check, left blind spot over your left shoulder, left door mirror, the road ahead, centre mirror, right door mirror and the right blind spot over your right shoulder. If you see another road user who may benefit by seeing a signal from you right signal if no one would benefit by seeing a signal final check over right shoulder and release the parking brake, steering right. Cancel signal if necessary and steer straight re check centre mirror. Count to three and take foot off the clutch pedal. **Stopping** look well ahead and select a place to stop, check centre and left door mirror and signal if necessary if it is safe steer left and line the kerb up with the centre of the dash board steer straight for a couple of car lengths. Clutch down (left foot) and apply gentle pressure to the brake pedal (right foot) keep both hands on the steering wheel until the car has completely stopped, then secure the car by applying the parking brake, select neutral and relax feet.



Finding a safe and convenient place at the side of the road.

You may be asked as many as six or seven times times to find a safe and convenient place to park / stop at the side of the road whilst on test. Usually the examiner has already seen an appropriate place some 100yds ahead, so look well ahead and do not rush into the nearest available place. Make sure you line up parallel to the kerb. The following diagram shows (in red) areas where an examiner may mark against you during the practical test.

Moving off and stopping on a level road

Find a SAFE, LEGAL & CONVENIENT place to stop on the left

